



PRODUCT REPORT

MATRXDRIVE™ FAN ARRAY SYSTEM

The **MATRXDRIVE** fan array system is BAC's state-of-the-art multiple fans, direct drive design to deliver **superior reliability and performance.**

Equipped with permanent magnet motors and integrated variable frequency drives (VFDs) connected to a terminal box, the **MATRXDRIVE** sets a **new standard in efficiency and convenience** as no maintenance is required.

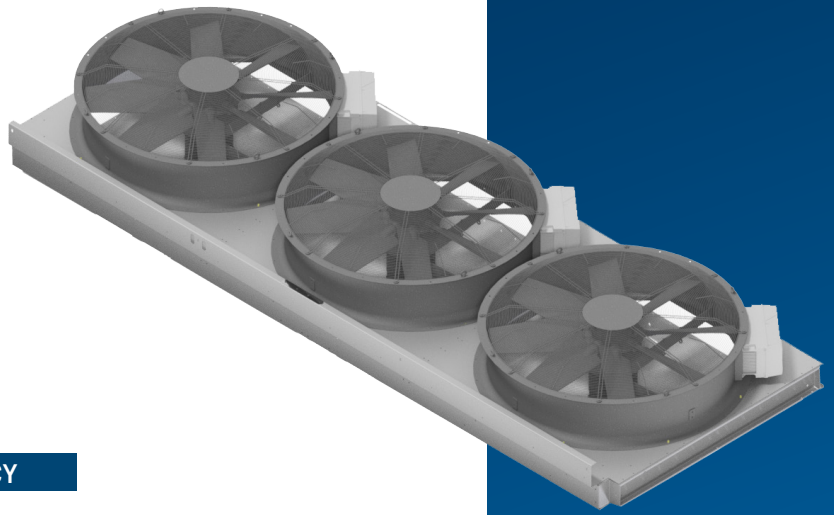
STATE-OF-THE-ART

MAINTENANCE FREE

ENERGY EFFICIENT

DIRECT DRIVE DESIGN





UNMATCHED RELIABILITY AND REDUNDANCY

Reliable performance - The MATRXDRIVE system ensures continuous operation by incorporating multiple independent axial fans with individual direct drive motors and variable frequency drives. This system minimizes the risk of system failure, ensuring consistent and continuous performance.

MINIMUM MAINTENANCE

Maintenance-free permanent magnet motors - The permanent magnet direct driven fan-motor assembly requires no maintenance whatsoever. This eliminates the need to check belt tension, lubricate bearings, as well as replacing components.

ENERGY EFFICIENT

Reduce energy costs - MATRXDRIVE equipped units rely on high efficient permanent magnet motors and a direct drive coupling to the fans to eliminate any further transmission losses. The PM motors have a superior efficiency that exceeds IE4 requirements and are equipped with their own variable frequency drive to optimize the overall unit performance.



The **MATRXDRIVE** system is available for the following units:

Productline	Fan type	Box size
FXVS closed circuit cooling towers	Standard fan	12 x 12
FXVS closed circuit cooling towers	Standard fan	12 x 18
CXVS evaporative condenser	Standard fan	12 x 12
CXVS evaporative condenser	Standard fan	12 x 18

WWW.BALTIMOREAIRCOIL.COM