

FXVS

Closed circuit cooling towers



Key benefits

- Star in energy efficiency
- Low maintenance and easy inspection
- Unmatched hygiene control



FXVS characteristics

Combined flow, axial fan, induced draft

Capacity range

up to 1890 kW

Water distribution

pressurized

Maximum entering fluid temperature

82°C

Typical applications

- Small to medium HVAC and industrial applications such as water source heat pump loops and air compressor cooling.
- Tight enclosures and installations requiring a single air inlet.
- Ideal for unit replacement



Star in energy efficiency

- [Evaporative cooling](#) PLUS unique [combined heat transfer system](#) for minimized system-wide energy consumption. This patented combined flow design from BAC ensures unrivalled efficient heat rejection at the lowest possible energy input.
- **Axial fan** uses **half the energy** of similar centrifugal fan units.
- [Bacross II fill](#) factory-configured for unrivalled water/air contact and minimal air pressure drop. Guarantees **optimal cooling tower efficiency**.
- **High efficiency fan motors**.

Low maintenance and easy inspection

- Inspect and maintain safely towers with **unrivalled comfort, while standing** inside.
- The FXVS has a **spacious plenum** (internal area) and **easy inspection/maintenance access**.
- **Access via large hinged door to optional internal walkway**: no basin draining needed for unit interior inspection.
- Inspection of **water distribution system** (spray branches and nozzles) possible outside the unit, **during operation**.
- Easy to inspect the **coil** during operation from the outside or from the inside via the **removable drift eliminator modules**.
- Easy to inspect the **fill** from the inside and via the **removable combined inlet shields** from the outside.
- The patented [Bacross II fill](#) sheets reduce fouling and are telescopically supported, allowing complete inspection of the fill core without dismantling.
- Self-cleaning cold water basin and fill above **sloped basin** to flush out dirt and debris.
- [Fans are easily accessible](#) from the in- and outside
- Optional clean out port **helps remove** silt and sludge from the cooling tower basin.
- Removable **suction strainer** anti-vortex hood.
- Make-up, drain and overflow easily **accessible** for inspection and cleaning.

Unmatched hygiene control

- Easy-clean and easy-inspect FXVS towers **reduce hygiene risks** from bacteria (e.g. Legionella) or biofilm inside.
- The patented [Bacross II fill](#) sheets reduce fouling and are telescopically supported, allowing complete inspection AND cleaning of the fill core without dismantling.
- **Combined inlet shields** block sunlight to prevent biological growth in the tower, filter the air and stop water splashing outside.
- High efficient **drift eliminators** to prevent droplets escaping into the air. Their performance is tested and certified by Eurovent.
- Optional clean out port **helps remove** silt and sludge from the cooling tower basin.
- Optional sump sweeper piping **prevents sediment collecting in the cold water basin**.

Year-round reliable performance



- The **thermal performance** of FXVS is tested and certified by [CTI-Eurovent](#).
- Unique and patented heat transfer system: [featuring combined flow](#) via heat exchange coil and fill pack, for fine temperature applications and thermal challenges.
- **Multiple fan motor system** covers independent fan motor and drive assembly per fan for stand-by in case of fan failure.
- Various corrosion-resistant materials, including the unique [Baltibond hybrid coating](#) for guaranteed long service life.
- **Single air inlet and discharge**, fits in most enclosures.

Ultra silent design

- FXVS units include **low noise axial fans** for minimal surrounding noise. To reduce noise even further, choose for Whisper Quiet fans.
- Factory designed, tested and rated sound attenuation is available on air inlet to cut operation noise even further.
- Single-side air inlet, and a **quieter tower rear** for more noise-sensitive areas.
- [BACross II fill](#) guides smoothly the water all the way into the basin **without water splash noise**.

Cheap to install

- FXVS cooling towers are factory-built and shipped in sections for larger models to reduce the overall size and weight, allowing **easy on-site section assembly** with smaller crane.

You want to use the FXVS cooling tower to cool your process water? Contact your local [BAC representative](#).

Downloads

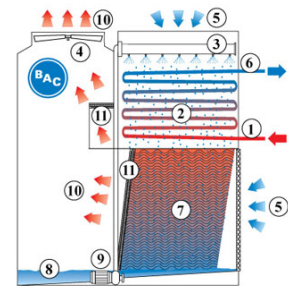
- [FXVS closed circuit cooling towers](#)
- [FXVS closed circuit cooling towers \(brochure\)](#)
- [Operating and Maintenance FXVS](#)
- [Rigging and installation FXVS](#)
- [BAC - Eurovent Certification](#)
- [Spare Parts for FXVS](#)
- [Retrofit Opportunities for FXVS](#)
- [Combined Flow Technology](#)

Principle of operation

Closed circuit cooling towers

Principle of operation

The FXVS combines the function of a cooling tower and a heat exchanger into one unit. The warm process **fluid (1)** circulates through a **heat exchanger coil (2)**, which is wetted by a **spray system (3)**. In parallel with the water spray flow, an **axial fan (4)** draws **air (5)** over the coil. The evaporation process cools the **fluid (6)** inside the coil. The process fluid travels from the bottom to the top of the coil because the coldest spray water and air are in the top of the tower. The spray water falls onto a **fill pack (7)** where it is cooled before falling into the **water basin (8)**. The spray **pump (9)** recirculates the cooled water to the top of the tower. The warm saturated **air (10)** leaves the tower through the **drift eliminators (11)** which remove water droplets from the air.



You want to use the FXVS cooling tower to cool your process fluid?
 Contact your BAC representative or use the [information request form](#) and tell us how we can help you.

Downloads

- [Combined Flow Technology](#)

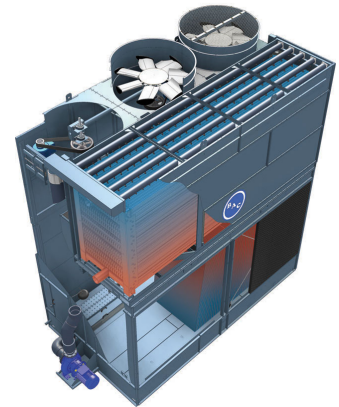
Construction details

Closed circuit cooling towers

Construction details

1. Material options

- Heavy-gauge hot-dip galvanized steel is used for external unit steel panels and structural elements featuring [Baltiplus Corrosion Protection](#).
- The unique [Baltibond hybrid coating](#) is an optional extra. A hybrid polymer coating for longer service life, applied pre-assembly to all hot-dip galvanized steel components of the unit.
- [Optional stainless steel](#) panels and structural elements of type 304L or 316L for extreme applications.
- Or the economical alternative: a **water-contact stainless steel cold water basin**. Its key components and the basin itself are stainless steel. The rest is protected with the Baltibond hybrid coating.



2. Heat transfer media

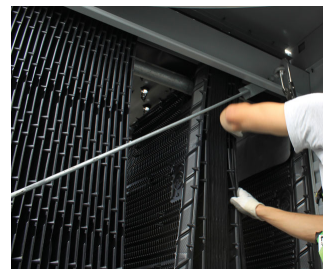
Unique and patented heat transfer system: featuring [combined flow](#) via heat exchange coil and fill pack.

Coil

- Our heat transfer media is a **cooling coil**. The coil is constructed of continuous length of prime surface steel, hot-dip galvanized after fabrication. Sloping tubes for free drainage of fluid. Designed for maximum 10 bar operating pressure according to PED.
- All hot dip galvanized and stainless steel coils are delivered with BAC's **Internal Coil Corrosion Protection**, to ensure an optimal internal corrosion protection and guaranteed quality.
- **Optional stainless steel coils** are in type 304L or 316L.
- Maximum temperature 82°C.

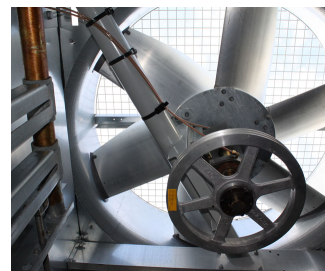
Fill

- Patented [BACross II fill](#) with integrated **drift eliminators** certified by Eurovent. Its thermal performance is proven during comprehensive [lab thermal performance tests](#), and it offers you unrivalled system efficiency. The fill pack includes individual **sheets and a telescopic fill support**. Sheets are easy to inspect and clean inside the tower without dismantling, eliminating the need for frequent fill replacement.
- In self-extinguishing **plastic**, which will not rot, decay or decompose.



3. Air movement system

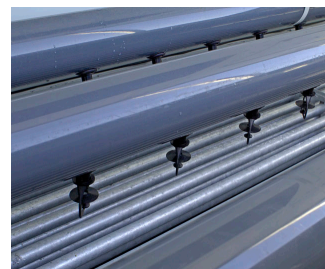
- **FXVS fan system** features two corrosion resistant sheaves, belt and motor. Together with the heavy duty fan shaft bearings and the BAC **Impervix** motor, this guarantees optimal and year-round operational efficiency.
- **Low kW and noise axial fan(s)** in corrosion resistant aluminum, encased in fan cylinder with removable fan guard. To reduce noise even further, choose for a **Whisper Quiet fan** with minimal impact on thermal performance.
- Our **drift eliminators** in the coil section come in UV-resistant plastic, which will not rot, decay or decompose and their performance is tested and **certified by Eurovent**. They are assembled in **easily handled and removable sections**, for optimal coil access.
- Easy removable UV-resistant plastic **combined inlet shields** at air inlet or optional at the top air inlet. Sunlight block to prevent biological growth in tower, air filter and water splash-out stop.



4. Water distribution system

These consist of:

- **Spray branches** with wide non-clog, plastic, 360° distribution nozzles secured in grommets. Overlapping spray pattern for complete coil wetting. A **sloped cold water basin** with:
 - large hinged and inward swinging **access door**
 - anti-vortexing **strainers** and **make up** both easily accessible from inside the unit.
- Close coupled, bronze fitted centrifugal **spray pump** with totally enclosed fan cooled (TEFC) motor. Bleed line with metering valve installed from pump discharge to overflow.



Need more information? Contact your local [BAC representative](#).

Options and accessories

Closed circuit cooling towers

Options and accessories

Below is a listing of the main FXVS options and accessories. If your required option or accessory is not listed, look no further than your [local BAC representative](#).



Sound attenuation

Reducing noise at air **intake and discharge points** brings us closer to silent cooling equipment.



Whisper Quiet fan

Reduce noise even further with **ultra low-noise factory-tested fans**.



Remote sump connection

The best way to **prevent a sump freezing** is to use the auxiliary remote variety within a heated area. Shutting off the circulating pump allows all the water in the water distribution, as well as that in suspension and the sump to drain freely to the auxiliary sump.



Extended lubrication lines

Extended lubrication lines with easily accessible grease fittings can be used **to lubricate** fan shaft bearings.



Internal service platform

An internal platform helping you **access the unit top inside** and safely inspect your cooling towers.



External service platform

An external platform helping you **access the external unit top** and safely inspect your cooling equipment.



Vibration cut out switch

When excessive vibration occurs, this switch shuts down the fan, ensuring your cooling equipment **operates safely.**



Motor removal davit

For **easy removal or lifting** of the side motor.



Electric water level control package

For **perfectly precise water level control**, replace the standard mechanical valve with our electrical water level controller.



Safety switch

Cuts power to motors **with safety in mind** during inspection or maintenance.



Basin heater package

Thanks to our factory-installed heaters, the water stays at 4°C and **never freezes**, even during equipments downtime and however cold it gets outside.



Standby pump

Install a standby **reserve spray pump** as failure backup.



Water treatment equipment

Devices to control water treatment are needed to ensure proper **cooling tower water care**. Not only does this help protect the components and fill pack, controlling corrosion, scaling and fouling, it also avoids the proliferation of harmful bacteria, including **legionella**, in the recirculating water.



Filter

Separators and media filters efficiently **remove suspended solids** in the recirculating water, reducing system cleaning costs and optimizing water treatment results. Filtration helps you keep the recirculating water clean.



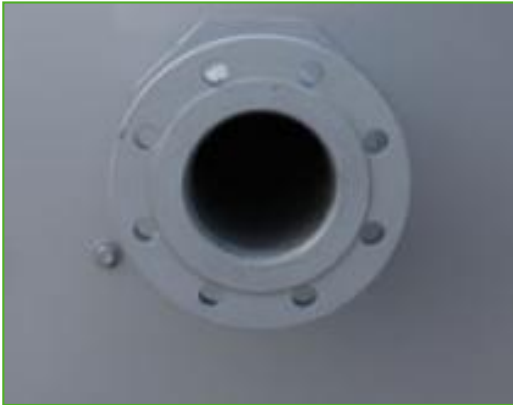
Sump sweeper piping

Sump sweeper piping **prevents sediment collecting in the cold water basin** of the unit. A complete piping system, including nozzles, is installed in the basin **for connection to side stream filtration** equipment.



Clean out port

Clean out port **makes it easy to eliminate silt and sludge** from the basin when cleaning and flushing the sump.



Flanges

Flanges facilitate **pipng connections** on-site.



Special needs?

Closed circuit cooling towers

Special needs?

Our ongoing [R&D](#) investment helps BAC offer you a complete set of solutions **for FXVS closed circuit cooling towers that meet your needs**. Plus, we also cater for extra requirements such as:

Sound control

FXVS uses a low noise axial fan.

Helping keep it near noiseless:

- [Sound attenuators](#)
- [Whisper Quiet fan](#)

Water savings

You need water for evaporative cooling. At BAC, however, we offer acclaimed and advanced water saving technologies. Helping in this aim are:

- [Electric water level control package](#)
- [Water treatment equipment](#)
- [Sump sweeper piping](#)
- [Filters](#)
- [Baltibond hybrid coating](#)

BAC boasts a **complete water saving product range** for unrivalled water saving AND exceptional thermal efficiency, thanks to water saving technology. Hybrid wet/dry cooling towers are: [HXI](#), [HFL](#), [TrilliumSeries coolers](#).



Energy saving

FXVS uses evaporative cooling technology for lower operating temperatures than other cooling methods. With the following options, reduce energy costs still further:

- Thermostat

Enhanced hygiene and water care

Water circulates in evaporative cooling towers and it is important to avoid excessive accumulation of dissolved solids. The following options help keep your cooling tower clean:

- [Remote sump connection](#)
- [Water treatment equipment](#)
- [Sump sweeper piping](#)
- [Clean out port](#)
- [Filters](#)

To control biological growth and scale formation, the water quality of the circulated water should be checked regularly. [Water quality guidelines](#) can be found in the [Knowledge center](#) of the website.



Year-round reliable operation

Inspect and maintain your cooling tower and protect it against extreme weather for year-round reliability. The options below help keep your cooling tower running smoothly and reliably and facilitate maintenance.

- [Remote sump connection](#)
- [Water treatment equipment](#)
- [Sump sweeper piping](#)
- [Clean out port](#)
- [Filters](#)
- [Internal service platform](#)
- [External service platform](#)
- [Vibration cut out switch](#)
- [Electric water level control package](#)
- [Extended lubrication lines](#)
- [Baltibond hybrid coating](#)

Do you too want to benefit from the above solutions? Contact your [local BAC representative](#) for more information.



FXVS 0806-0818

Closed circuit cooling towers

Engineering data

Remark: Do not use for construction. Refer to factory certified dimensions & weights. This page includes data current at time of publication, which should be reconfirmed at the time of purchase. In the interest of product improvement, specifications, weights and dimensions are subject to change without notice.

[FXVS cooling tower performance at standard conditions - 30% EG](#)

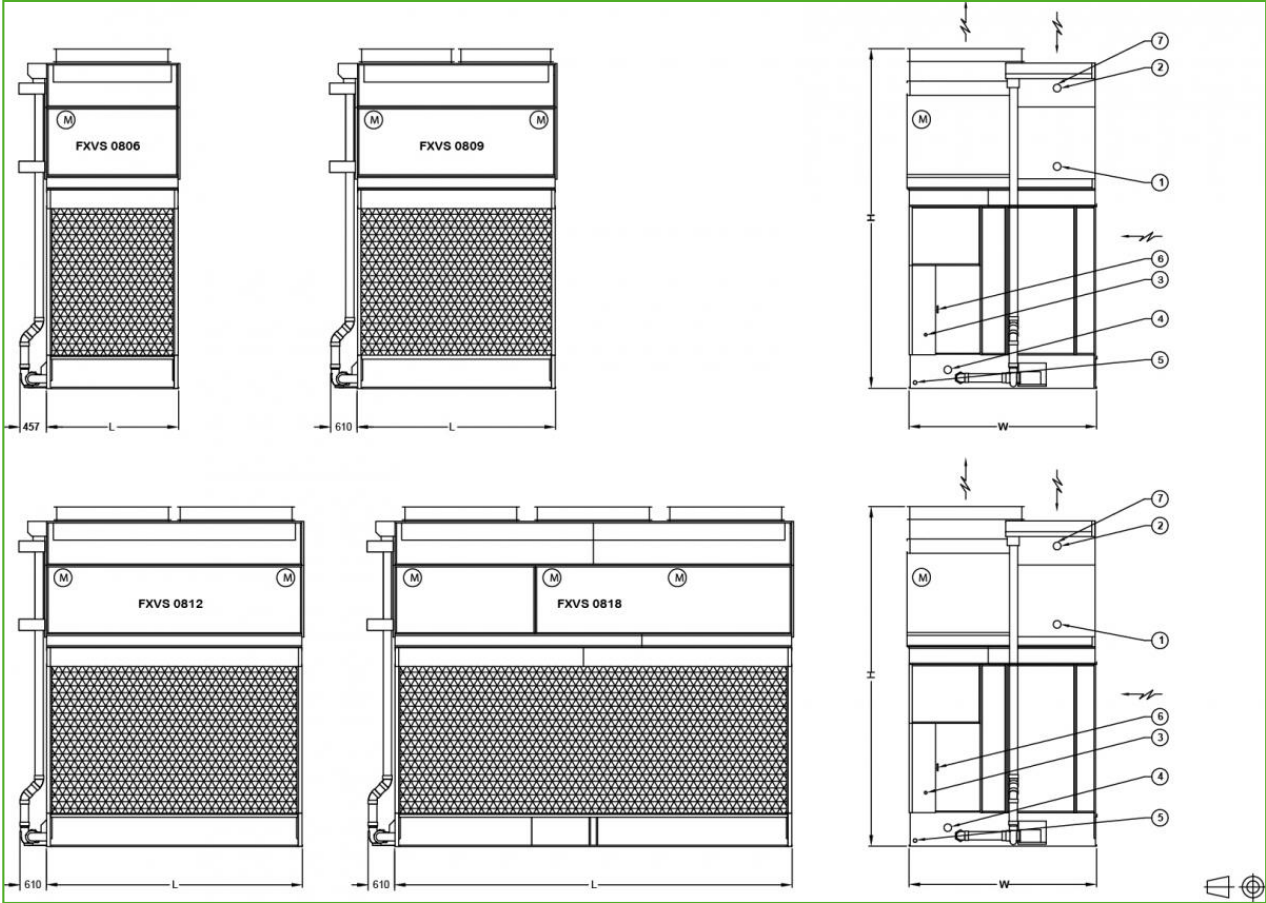
[FXVS cooling tower performance at standard conditions - 30% PG](#)

[FXVS cooling tower performance at standard conditions - water](#)

[FXVS cooling tower - pressure drop](#)

Last update: 01/06/2023

FXVS 0806-0818



1. Fluid in; 2. Fluid out; 3. Make up; 4. Overflow; 5. Drain; 6. Access door; 7. Vent ND15.



Model	Weights (kg)			Dimensions (mm)			Air Flow (m ³ /s)	Fan Motor (kW)	Water Flow (l/s)	Pump Motor (kW)	Coil Volume (L)
	Oper. Weight (kg)	Ship. Weight(kg)	Heaviest Section (kg)	L	W	H					
FXVS 0806B-12D-G	3770	2500	1370	1822	2584	4792	11.7	(1x) 2.2	18.3	(1x) 1.5	(1x) 183
FXVS 0806B-12D-H	3780	2510	1380	1822	2584	4792	13.8	(1x) 4.0	18.3	(1x) 1.5	(1x) 183
FXVS 0806B-12D-J	3800	2540	1400	1822	2584	4792	15.8	(1x) 5.5	18.3	(1x) 1.5	(1x) 183
FXVS 0806B-12D-K	3810	2540	1410	1822	2584	4792	17.4	(1x) 7.5	18.3	(1x) 1.5	(1x) 183
FXVS 0806B-12D-L	3870	2610	1470	1822	2584	4792	19.4	(1x) 11.0	18.3	(1x) 1.5	(1x) 183
FXVS 0806B-16D-G	3950	2630	1490	1822	2584	4792	11.6	(1x) 2.2	18.3	(1x) 1.5	(1x) 237
FXVS 0806B-16D-H	3960	2640	1500	1822	2584	4792	13.7	(1x) 4.0	18.3	(1x) 1.5	(1x) 237
FXVS 0806B-16D-J	3990	2660	1530	1822	2584	4792	15.6	(1x) 5.5	18.3	(1x) 1.5	(1x) 237
FXVS 0806B-16D-K	3990	2670	1530	1822	2584	4792	17.2	(1x) 7.5	18.3	(1x) 1.5	(1x) 237
FXVS 0806B-16D-L	4050	2730	1600	1822	2584	4792	19.2	(1x) 11.0	18.3	(1x) 1.5	(1x) 237
FXVS 0806B-20D-G	4130	2760	1620	1822	2584	4792	11.4	(1x) 2.2	18.3	(1x) 1.5	(1x) 293
FXVS 0806B-20D-H	4140	2770	1630	1822	2584	4792	13.5	(1x) 4.0	18.3	(1x) 1.5	(1x) 293
FXVS 0806B-20D-J	4170	2790	1650	1822	2584	4792	15.5	(1x) 5.5	18.3	(1x) 1.5	(1x) 293
FXVS 0806B-20D-K	4170	2800	1660	1822	2584	4792	17.0	(1x) 7.5	18.3	(1x) 1.5	(1x) 293
FXVS 0806B-20D-L	4240	2860	1720	1822	2584	4792	18.9	(1x) 11.0	18.3	(1x) 1.5	(1x) 293
FXVS 0806B-24D-G	4540	3110	2090	1822	2584	5673	11.3	(1x) 2.2	18.3	(1x) 1.5	(1x) 348
FXVS 0806B-24D-H	4550	3120	2100	1822	2584	5673	13.4	(1x) 4.0	18.3	(1x) 1.5	(1x) 348
FXVS 0806B-24D-J	4570	3140	2120	1822	2584	5673	15.3	(1x) 5.5	18.3	(1x) 1.5	(1x) 348
FXVS	4580	3150	2130	1822	2584	5673	16.8	(1x)	18.3	(1x)	(1x)



0806B-24D-K								7.5		1.5	348
FXVS 0806B-24D-L	4640	3210	2190	1822	2584	5673	18.8	(1x) 11.0	18.3	(1x) 1.5	(1x) 348
FXVS 0806B-28D-G	4720	3240	2220	1822	2584	5673	11.2	(1x) 2.2	18.3	(1x) 1.5	(1x) 402
FXVS 0806B-28D-H	4730	3250	2230	1822	2584	5673	13.3	(1x) 4.0	18.3	(1x) 1.5	(1x) 402
FXVS 0806B-28D-J	4760	3270	2250	1822	2584	5673	15.2	(1x) 5.5	18.3	(1x) 1.5	(1x) 402
FXVS 0806B-28D-K	4760	3270	2260	1822	2584	5673	16.7	(1x) 7.5	18.3	(1x) 1.5	(1x) 402
FXVS 0806B-28D-L	4830	3340	2320	1822	2584	5673	18.6	(1x) 11.0	18.3	(1x) 1.5	(1x) 402
FXVS 0806B-32D-G	4910	3360	2350	1822	2584	5673	11.3	(1x) 2.2	18.3	(1x) 1.5	(1x) 458
FXVS 0806B-32D-H	4920	3370	2360	1822	2584	5673	13.3	(1x) 4.0	18.3	(1x) 1.5	(1x) 458
FXVS 0806B-32D-J	4940	3390	2380	1822	2584	5673	15.2	(1x) 5.5	18.3	(1x) 1.5	(1x) 458
FXVS 0806B-32D-K	4940	3400	2380	1822	2584	5673	16.8	(1x) 7.5	18.3	(1x) 1.5	(1x) 458
FXVS 0806B-32D-L	5010	3460	2450	1822	2584	5673	18.7	(1x) 11.0	18.3	(1x) 1.5	(1x) 458
FXVS 0806B-36D-G	5090	3490	2470	1822	2584	5673	11.1	(1x) 2.2	18.3	(1x) 1.5	(1x) 512
FXVS 0806B-36D-H	5100	3500	2480	1822	2584	5673	13.2	(1x) 4.0	18.3	(1x) 1.5	(1x) 512
FXVS 0806B-36D-J	5120	3520	2500	1822	2584	5673	15.0	(1x) 5.5	18.3	(1x) 1.5	(1x) 512
FXVS 0806B-36D-K	5130	3530	2510	1822	2584	5673	16.5	(1x) 7.5	18.3	(1x) 1.5	(1x) 512
FXVS 0806B-36D-L	5180	3590	2570	1822	2584	5673	18.4	(1x) 11.0	18.3	(1x) 1.5	(1x) 512
FXVS 0809B-16D-K	5650	3630	2090	2737	2584	4792	21.9	(2x) 4.0	34.7	(1x) 4.0	(1x) 348
FXVS 0809B-16D-L	5710	3690	2150	2737	2584	4792	25.0	(2x) 5.5	34.7	(1x) 4.0	(1x) 348
FXVS 0809B-20D-K	5920	3820	2280	2737	2584	4792	21.6	(2x) 4.0	34.7	(1x) 4.0	(1x) 429
FXVS 0809B-	5980	3880	2340	2737	2584	4792	24.7	(2x) 5.5	34.7	(1x) 4.0	(1x) 429



20D-L											
FXVS 0809B- 24D-K	6470	4280	2910	2737	2584	5673	21.6	(2x) 4.0	34.7	(1x) 4.0	(1x) 512
FXVS 0809B- 24D-L	6530	4340	2960	2737	2584	5673	24.7	(2x) 5.5	34.7	(1x) 4.0	(1x) 512
FXVS 0809B- 24T-K	6560	4380	3000	2737	2584	5673	21.5	(2x) 4.0	34.7	(1x) 4.0	(1x) 513
FXVS 0809B- 24T-L	6620	4430	3060	2737	2584	5673	24.6	(2x) 5.5	34.7	(1x) 4.0	(1x) 513
FXVS 0809B- 28D-K	6740	4470	3100	2737	2584	5673	21.4	(2x) 4.0	34.7	(1x) 4.0	(1x) 594
FXVS 0809B- 28D-L	6800	4530	3150	2737	2584	5673	24.4	(2x) 5.5	34.7	(1x) 4.0	(1x) 594
FXVS 0809B- 30T-K	7000	4690	3310	2737	2584	5673	21.3	(2x) 4.0	34.7	(1x) 4.0	(1x) 635
FXVS 0809B- 30T-L	7050	4740	3370	2737	2584	5673	24.4	(2x) 5.5	34.7	(1x) 4.0	(1x) 635
FXVS 0809B- 32D-K	7020	4660	3290	2737	2584	5673	21.3	(2x) 4.0	34.7	(1x) 4.0	(1x) 677
FXVS 0809B- 32D-L	7070	4720	3340	2737	2584	5673	24.3	(2x) 5.5	34.7	(1x) 4.0	(1x) 677
FXVS 0809B- 36D-K	7290	4850	3480	2737	2584	5673	21.1	(2x) 4.0	34.7	(1x) 4.0	(1x) 759
FXVS 0809B- 36D-L	7350	4910	3530	2737	2584	5673	24.1	(2x) 5.5	34.7	(1x) 4.0	(1x) 759
FXVS 0809B- 36T-K	7380	4940	3570	2737	2584	5673	21.1	(2x) 4.0	34.7	(1x) 4.0	(1x) 759
FXVS 0809B- 36T-L	7440	5000	3620	2737	2584	5673	24.1	(2x) 5.5	34.7	(1x) 4.0	(1x) 759
FXVS 0812B- 12D-K	6840	4220	2400	3651	2584	4792	27.9	(2x) 4.0	45.4	(1x) 4.0	(1x) 348
FXVS 0812B- 12D-L	6880	4260	2440	3651	2584	4792	31.9	(2x) 5.5	45.4	(1x) 4.0	(1x) 348
FXVS 0812B- 12D-M	6900	4290	2460	3651	2584	4792	35.0	(2x) 7.5	45.4	(1x) 4.0	(1x) 348
FXVS 0812B- 12D-O	6950	4340	2510	3651	2584	4792	39.0	(2x) 11.0	45.4	(1x) 4.0	(1x) 348
FXVS 0812B- 16D-K	7200	4480	2650	3651	2584	4792	27.5	(2x) 4.0	45.4	(1x) 4.0	(1x) 458
FXVS 0812B- 16D-L	7240	4520	2690	3651	2584	4792	31.5	(2x) 5.5	45.4	(1x) 4.0	(1x) 458



FXVS 0812B- 16D-M	7270	4550	2720	3651	2584	4792	34.6	(2x) 7.5	45.4	(1x) 4.0	(1x) 458
FXVS 0812B- 16D-O	7320	4590	2770	3651	2584	4792	38.5	(2x) 11.0	45.4	(1x) 4.0	(1x) 458
FXVS 0812B- 16Q-K	7280	4550	2730	3651	2584	4792	27.4	(2x) 4.0	45.4	(1x) 4.0	(1x) 456
FXVS 0812B- 16Q-L	7320	4590	2770	3651	2584	4792	31.4	(2x) 5.5	45.4	(1x) 4.0	(1x) 456
FXVS 0812B- 16Q-M	7340	4620	2790	3651	2584	4792	34.5	(2x) 7.5	45.4	(1x) 4.0	(1x) 456
FXVS 0812B- 16Q-O	7390	4670	2840	3651	2584	4792	38.4	(2x) 11.0	45.4	(1x) 4.0	(1x) 456
FXVS 0812B- 20D-K	7560	4730	2900	3651	2584	4792	27.2	(2x) 4.0	45.4	(1x) 4.0	(1x) 567
FXVS 0812B- 20D-L	7600	4770	2940	3651	2584	4792	31.1	(2x) 5.5	45.4	(1x) 4.0	(1x) 567
FXVS 0812B- 20D-M	7630	4800	2970	3651	2584	4792	34.2	(2x) 7.5	45.4	(1x) 4.0	(1x) 567
FXVS 0812B- 20D-O	7680	4850	3020	3651	2584	4792	38.1	(2x) 11.0	45.4	(1x) 4.0	(1x) 567
FXVS 0812B- 24Q-K	8240	5300	3670	3651	2584	5673	26.9	(2x) 4.0	45.4	(1x) 4.0	(1x) 678
FXVS 0812B- 24Q-L	8280	5340	3710	3651	2584	5673	30.8	(2x) 5.5	45.4	(1x) 4.0	(1x) 678
FXVS 0812B- 24Q-M	8310	5360	3740	3651	2584	5673	33.8	(2x) 7.5	45.4	(1x) 4.0	(1x) 678
FXVS 0812B- 24Q-O	8350	5410	3780	3651	2584	5673	37.7	(2x) 11.0	45.4	(1x) 4.0	(1x) 678
FXVS 0812B- 24T-K	8260	5310	3690	3651	2584	5673	26.9	(2x) 4.0	45.4	(1x) 4.0	(1x) 678
FXVS 0812B- 24T-L	8300	5350	3730	3651	2584	5673	30.8	(2x) 5.5	45.4	(1x) 4.0	(1x) 678
FXVS 0812B- 24T-M	8320	5380	3760	3651	2584	5673	33.9	(2x) 7.5	45.4	(1x) 4.0	(1x) 678
FXVS 0812B- 24T-O	8370	5430	3800	3651	2584	5673	37.7	(2x) 11.0	45.4	(1x) 4.0	(1x) 678
FXVS 0812B- 30T-K	8830	5720	4090	3651	2584	5673	26.6	(2x) 4.0	45.4	(1x) 4.0	(1x) 842
FXVS 0812B- 30T-L	8870	5760	4130	3651	2584	5673	30.4	(2x) 5.5	45.4	(1x) 4.0	(1x) 842
FXVS	8890	5790	4160	3651	2584	5673	33.5	(2x)	45.4	(1x)	(1x)



0812B-30T-M								7.5		4.0	842
FXVS 0812B-30T-O	8940	5830	4210	3651	2584	5673	37.3	(2x) 11.0	45.4	(1x) 4.0	(1x) 842
FXVS 0812B-32Q-K	8960	5800	4170	3651	2584	5673	26.5	(2x) 4.0	45.4	(1x) 4.0	(1x) 897
FXVS 0812B-32Q-L	9000	5840	4210	3651	2584	5673	30.3	(2x) 5.5	45.4	(1x) 4.0	(1x) 897
FXVS 0812B-32Q-M	9030	5860	4240	3651	2584	5673	33.4	(2x) 7.5	45.4	(1x) 4.0	(1x) 897
FXVS 0812B-32Q-O	9080	5910	4290	3651	2584	5673	37.2	(2x) 11.0	45.4	(1x) 4.0	(1x) 897
FXVS 0812B-36T-K	9340	6070	4440	3651	2584	5673	26.5	(2x) 4.0	45.4	(1x) 4.0	(1x) 1006
FXVS 0812B-36T-L	9380	6110	4480	3651	2584	5673	30.2	(2x) 5.5	45.4	(1x) 4.0	(1x) 1006
FXVS 0812B-36T-M	9410	6140	4510	3651	2584	5673	33.3	(2x) 7.5	45.4	(1x) 4.0	(1x) 1006
FXVS 0812B-36T-O	9450	6170	4550	3651	2584	5673	37.0	(2x) 11.0	45.4	(1x) 4.0	(1x) 1006
FXVS 0818B-24Q-K	12190	7730	5300	5480	2584	5826	43.7	(3x) 4.0	54.6	(1x) 5.5	(1x) 1005
FXVS 0818B-24Q-L	12250	7790	5360	5480	2584	5826	49.9	(3x) 5.5	54.6	(1x) 5.5	(1x) 1005
FXVS 0818B-24Q-M	12280	7830	5390	5480	2584	5826	54.9	(3x) 7.5	54.6	(1x) 5.5	(1x) 1005
FXVS 0818B-24Q-O	12390	7940	5500	5480	2584	5826	61.2	(3x) 11.0	54.6	(1x) 5.5	(1x) 1005
FXVS 0818B-24T-K	12210	7750	5320	5480	2584	5826	43.7	(3x) 4.0	54.6	(1x) 5.5	(1x) 1006
FXVS 0818B-24T-L	12270	7810	5380	5480	2584	5826	50.0	(3x) 5.5	54.6	(1x) 5.5	(1x) 1006
FXVS 0818B-24T-M	12300	7850	5410	5480	2584	5826	55.0	(3x) 7.5	54.6	(1x) 5.5	(1x) 1006
FXVS 0818B-24T-O	12410	7960	5520	5480	2584	5826	61.2	(3x) 11.0	54.6	(1x) 5.5	(1x) 1006
FXVS 0818B-32Q-K	13270	8490	6050	5480	2584	5826	43.1	(3x) 4.0	54.6	(1x) 5.5	(1x) 1325
FXVS 0818B-32Q-L	13330	8550	6110	5480	2584	5826	49.3	(3x) 5.5	54.6	(1x) 5.5	(1x) 1325
FXVS 0818B-	13370	8580	6150	5480	2584	5826	54.2	(3x) 7.5	54.6	(1x) 5.5	(1x) 1325



32Q-M											
FXVS 0818B- 32Q-O	13480	8690	6260	5480	2584	5826	60.3	(3x) 11.0	54.6	(1x) 5.5	(1x) 1325
FXVS 0818B- 36H-K	13930	8980	6540	5480	2584	5826	42.8	(3x) 4.0	54.6	(1x) 5.5	(1x) 1499
FXVS 0818B- 36H-L	13990	9040	6600	5480	2584	5826	49.0	(3x) 5.5	54.6	(1x) 5.5	(1x) 1499
FXVS 0818B- 36H-M	14020	9070	6640	5480	2584	5826	53.8	(3x) 7.5	54.6	(1x) 5.5	(1x) 1499
FXVS 0818B- 36H-O	14120	9170	6730	5480	2584	5826	60.0	(3x) 11.0	54.6	(1x) 5.5	(1x) 1499

FXVS 1012-1018

Closed circuit cooling towers

Engineering data

Remark: Do not use for construction. Refer to factory certified dimensions & weights. This page includes data current at time of publication, which should be reconfirmed at the time of purchase. In the interest of product improvement, specifications, weights and dimensions are subject to change without notice.

[FXVS cooling tower performance at standard conditions - 30% EG](#)

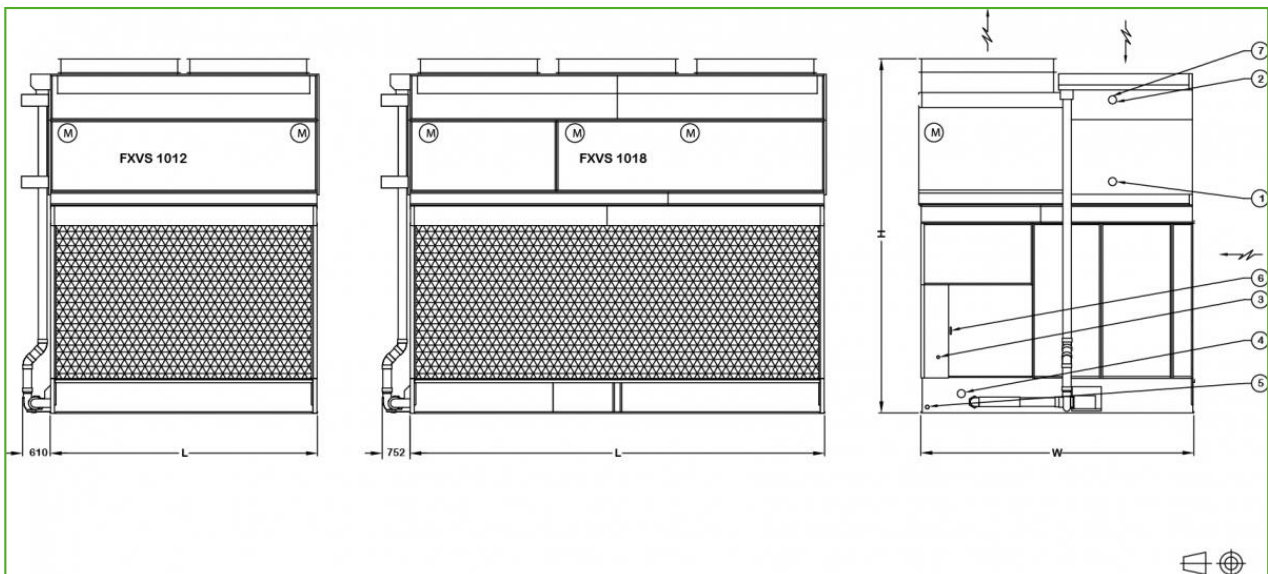
[FXVS cooling tower performance at standard conditions - 30% PG](#)

[FXVS cooling tower performance at standard conditions - water](#)

[FXVS cooling tower - pressure drop](#)

Last update: 01/06/2023

FXVS 1012-1018



1. Fluid in; 2. Fluid out; 3. Make up; 4. Overflow; 5. Drain; 6. Access door; 7. Vent ND15.



Model	Weights (kg)			Dimensions (mm)			Air Flow (m³/s)	Fan Motor (kW)	Water Flow (l/s)	Pump Motor (kW)	Coil Volume (L)
	Oper. Weight (kg)	Ship. Weight(kg)	Heaviest Section (kg)	L	W	H					
FXVS 1012C- 12D-K	8370	5050	2870	3651	2997	5199	29.8	(2x) 4.0	54.6	(1x) 5.5	(1x) 512
FXVS 1012C- 12D-L	8410	5090	2910	3651	2997	5199	34.1	(2x) 5.5	54.6	(1x) 5.5	(1x) 512
FXVS 1012C- 12D-M	8430	5120	2940	3651	2997	5199	37.5	(2x) 7.5	54.6	(1x) 5.5	(1x) 512
FXVS 1012C- 12D-O	8480	5170	2990	3651	2997	5199	41.8	(2x) 11.0	54.6	(1x) 5.5	(1x) 512
FXVS 1012C- 16D-K	8900	5420	3250	3651	2997	5199	29.5	(2x) 4.0	54.6	(1x) 5.5	(1x) 673
FXVS 1012C- 16D-L	8940	5460	3290	3651	2997	5199	33.8	(2x) 5.5	54.6	(1x) 5.5	(1x) 673
FXVS 1012C- 16D-M	8970	5490	3310	3651	2997	5199	37.1	(2x) 7.5	54.6	(1x) 5.5	(1x) 673
FXVS 1012C- 16D-O	9020	5540	3360	3651	2997	5199	41.4	(2x) 11.0	54.6	(1x) 5.5	(1x) 673
FXVS 1012C- 16Q-K	9000	5530	3350	3651	2997	5199	29.5	(2x) 4.0	54.6	(1x) 5.5	(1x) 671
FXVS 1012C- 16Q-L	9040	5570	3390	3651	2997	5199	33.7	(2x) 5.5	54.6	(1x) 5.5	(1x) 671
FXVS 1012C- 16Q-M	9070	5600	3420	3651	2997	5199	37.0	(2x) 7.5	54.6	(1x) 5.5	(1x) 671
FXVS 1012C- 16Q-O	9120	5650	3470	3651	2997	5199	41.2	(2x) 11.0	54.6	(1x) 5.5	(1x) 671
FXVS 1012C- 20D-K	9430	5800	3620	3651	2997	5199	29.3	(2x) 4.0	54.6	(1x) 5.5	(1x) 834
FXVS 1012C- 20D-L	9470	5840	3660	3651	2997	5199	33.5	(2x) 5.5	54.6	(1x) 5.5	(1x) 834
FXVS 1012C- 20D-M	9500	5860	3690	3651	2997	5199	36.8	(2x) 7.5	54.6	(1x) 5.5	(1x) 834
FXVS 1012C- 20D-O	9550	5910	3730	3651	2997	5199	41.0	(2x) 11.0	54.6	(1x) 5.5	(1x) 834
FXVS 1012C- 24D-K	10210	6410	4440	3651	2997	6080	29.1	(2x) 4.0	54.6	(1x) 5.5	(1x) 995
FXVS 1012C- 24D-L	10250	6450	4480	3651	2997	6080	33.2	(2x) 5.5	54.6	(1x) 5.5	(1x) 995
FXVS	10270	6470	4510	3651	2997	6080	36.5	(2x)	54.6	(1x)	(1x)



1012C-24D-M								7.5		5.5	995
FXVS 1012C-24D-O	10320	6520	4560	3651	2997	6080	40.7	(2x) 11.0	54.6	(1x) 5.5	(1x) 995
FXVS 1012C-24Q-K	10310	6510	4550	3651	2997	6080	29.1	(2x) 4.0	54.6	(1x) 5.5	(1x) 997
FXVS 1012C-24Q-L	10350	6550	4590	3651	2997	6080	33.2	(2x) 5.5	54.6	(1x) 5.5	(1x) 997
FXVS 1012C-24Q-M	10370	6570	4610	3651	2997	6080	36.6	(2x) 7.5	54.6	(1x) 5.5	(1x) 997
FXVS 1012C-24Q-O	10420	6620	4660	3651	2997	6080	40.7	(2x) 11.0	54.6	(1x) 5.5	(1x) 997
FXVS 1012C-24T-K	10330	6530	4570	3651	2997	6080	29.0	(2x) 4.0	54.6	(1x) 5.5	(1x) 996
FXVS 1012C-24T-L	10370	6570	4610	3651	2997	6080	33.2	(2x) 5.5	54.6	(1x) 5.5	(1x) 996
FXVS 1012C-24T-M	10400	6600	4640	3651	2997	6080	36.5	(2x) 7.5	54.6	(1x) 5.5	(1x) 996
FXVS 1012C-24T-O	10450	6650	4690	3651	2997	6080	40.7	(2x) 11.0	54.6	(1x) 5.5	(1x) 996
FXVS 1012C-28D-K	10740	6780	4820	3651	2997	6080	28.9	(2x) 4.0	54.6	(1x) 5.5	(1x) 1156
FXVS 1012C-28D-L	10780	6820	4860	3651	2997	6080	33.0	(2x) 5.5	54.6	(1x) 5.5	(1x) 1156
FXVS 1012C-28D-M	10810	6850	4880	3651	2997	6080	36.3	(2x) 7.5	54.6	(1x) 5.5	(1x) 1156
FXVS 1012C-30T-K	11170	7120	5160	3651	2997	6080	28.8	(2x) 4.0	54.6	(1x) 5.5	(1x) 1237
FXVS 1012C-30T-L	11210	7160	5200	3651	2997	6080	33.0	(2x) 5.5	54.6	(1x) 5.5	(1x) 1237
FXVS 1012C-30T-M	11230	7190	5230	3651	2997	6080	36.2	(2x) 7.5	54.6	(1x) 5.5	(1x) 1237
FXVS 1012C-30T-O	11280	7240	5280	3651	2997	6080	40.4	(2x) 11.0	54.6	(1x) 5.5	(1x) 1237
FXVS 1012C-32Q-K	11370	7250	5280	3651	2997	6080	28.7	(2x) 4.0	54.6	(1x) 5.5	(1x) 1319
FXVS 1012C-32Q-L	11410	7290	5320	3651	2997	6080	32.8	(2x) 5.5	54.6	(1x) 5.5	(1x) 1319
FXVS 1012C-32Q-M	11440	7310	5350	3651	2997	6080	36.1	(2x) 7.5	54.6	(1x) 5.5	(1x) 1319
FXVS 1012C-	11490	7360	5400	3651	2997	6080	40.2	(2x) 11.0	54.6	(1x) 5.5	(1x) 1319



32Q-O											
FXVS 1012C- 36T-K	11930	7640	5680	3651	2997	6080	28.6	(2x) 4.0	54.6	(1x) 5.5	(1x) 1479
FXVS 1012C- 36T-L	11970	7680	5720	3651	2997	6080	32.7	(2x) 5.5	54.6	(1x) 5.5	(1x) 1479
FXVS 1012C- 36T-M	11990	7710	5750	3651	2997	6080	36.0	(2x) 7.5	54.6	(1x) 5.5	(1x) 1479
FXVS 1012C- 36T-O	12030	7740	5780	3651	2997	6080	40.1	(2x) 11.0	54.6	(1x) 5.5	(1x) 1479
FXVS 1018C- 24Q-K	15290	9540	6570	5480	2997	6230	43.9	(3x) 4.0	85.2	(1x) 7.5	(1x) 1478
FXVS 1018C- 24Q-L	15350	9600	6630	5480	2997	6230	50.1	(3x) 5.5	85.2	(1x) 7.5	(1x) 1478
FXVS 1018C- 24Q-M	15380	9630	6670	5480	2997	6230	55.1	(3x) 7.5	85.2	(1x) 7.5	(1x) 1478
FXVS 1018C- 24Q-O	15490	9740	6780	5480	2997	6230	61.4	(3x) 11.0	85.2	(1x) 7.5	(1x) 1478
FXVS 1018C- 24Q-P	15530	9780	6820	5480	2997	6230	67.5	(3x) 15.0	85.2	(1x) 7.5	(1x) 1478
FXVS 1018C- 24T-K	15310	9560	6590	5480	2997	6230	43.9	(3x) 4.0	85.2	(1x) 7.5	(1x) 1479
FXVS 1018C- 24T-L	15370	9620	6650	5480	2997	6230	50.2	(3x) 5.5	85.2	(1x) 7.5	(1x) 1479
FXVS 1018C- 24T-M	15400	9650	6690	5480	2997	6230	55.2	(3x) 7.5	85.2	(1x) 7.5	(1x) 1479
FXVS 1018C- 24T-O	15520	9770	6800	5480	2997	6230	61.5	(3x) 11.0	85.2	(1x) 7.5	(1x) 1479
FXVS 1018C- 24T-P	15560	9810	6840	5480	2997	6230	67.6	(3x) 15.0	85.2	(1x) 7.5	(1x) 1479
FXVS 1018C- 32Q-K	16880	10650	7680	5480	2997	6230	43.3	(3x) 4.0	85.2	(1x) 7.5	(1x) 1963
FXVS 1018C- 32Q-L	16940	10710	7740	5480	2997	6230	49.5	(3x) 5.5	85.2	(1x) 7.5	(1x) 1963
FXVS 1018C- 32Q-M	16980	10740	7780	5480	2997	6230	54.5	(3x) 7.5	85.2	(1x) 7.5	(1x) 1963
FXVS 1018C- 32Q-O	17090	10860	7890	5480	2997	6230	60.7	(3x) 11.0	85.2	(1x) 7.5	(1x) 1963
FXVS 1018C- 32Q-P	17130	10900	7930	5480	2997	6230	66.7	(3x) 15.0	85.2	(1x) 7.5	(1x) 1963
FXVS 1018C- 36H-K	17840	11360	8390	5480	2997	6230	43.1	(3x) 4.0	85.2	(1x) 7.5	(1x) 2204



FXVS 1018C- 36H-L	17900	11420	8450	5480	2997	6230	49.3	(3x) 5.5	85.2	(1x) 7.5	(1x) 2204
FXVS 1018C- 36H-M	17930	11450	8490	5480	2997	6230	54.2	(3x) 7.5	85.2	(1x) 7.5	(1x) 2204
FXVS 1018C- 36H-O	18020	11550	8580	5480	2997	6230	60.4	(3x) 11.0	85.2	(1x) 7.5	(1x) 2204
FXVS 1018C- 36H-P	18060	11590	8620	5480	2997	6230	66.4	(3x) 15.0	85.2	(1x) 7.5	(1x) 2204

FXVS 1212-1218

Closed circuit cooling towers

Engineering data

Remark: Do not use for construction. Refer to factory certified dimensions & weights. This page includes data current at time of publication, which should be reconfirmed at the time of purchase. In the interest of product improvement, specifications, weights and dimensions are subject to change without notice.

[FXVS cooling tower performance at standard conditions - 30% EG](#)

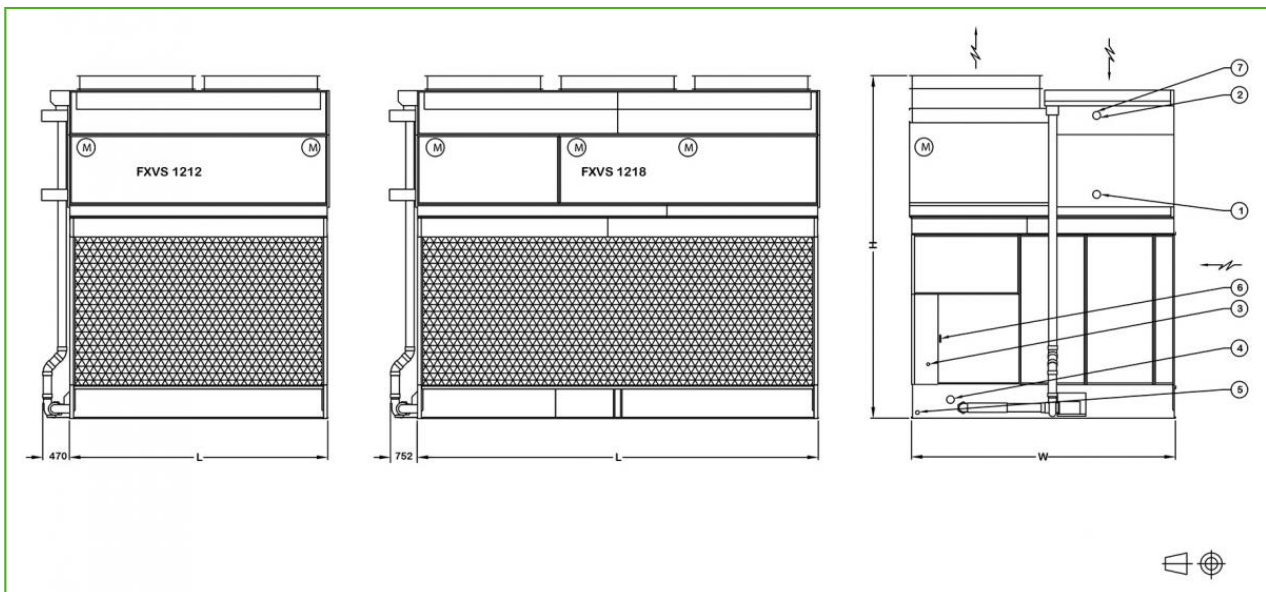
[FXVS cooling tower performance at standard conditions - 30% PG](#)

[FXVS cooling tower performance at standard conditions - water](#)

[FXVS cooling tower - pressure drop](#)

Last update: 01/06/2023

FXVS 1212-1218



1. Fluid in; 2. Fluid out; 3. Make up; 4. Overflow; 5. Drain; 6. Access door; 7. Vent ND15.



Model	Weights (kg)			Dimensions (mm)			Air Flow (m ³ /s)	Fan Motor (kW)	Water Flow (l/s)	Pump Motor (kW)	Coil Volume (L)
	Oper. Weight (kg)	Ship. Weight(kg)	Heaviest Section (kg)	L	W	H					
FXVS 1212C- 12D-K	9290	5470	3100	3651	3607	5199	34.8	(2x) 4.0	54.6	(1x) 5.5	(1x) 573
FXVS 1212C- 12D-L	9330	5510	3140	3651	3607	5199	39.8	(2x) 5.5	54.6	(1x) 5.5	(1x) 573
FXVS 1212C- 12D-M	9350	5530	3160	3651	3607	5199	43.7	(2x) 7.5	54.6	(1x) 5.5	(1x) 573
FXVS 1212C- 12D-O	9410	5590	3220	3651	3607	5199	50.0	(2x) 11.0	54.6	(1x) 5.5	(1x) 573
FXVS 1212C- 12D-P	9480	5660	3290	3651	3607	5199	56.2	(2x) 15.0	54.6	(1x) 5.5	(1x) 573
FXVS 1212C- 16D-K	9890	5890	3520	3651	3607	5199	34.4	(2x) 4.0	54.6	(1x) 5.5	(1x) 753
FXVS 1212C- 16D-L	9930	5930	3560	3651	3607	5199	39.3	(2x) 5.5	54.6	(1x) 5.5	(1x) 753
FXVS 1212C- 16D-M	9950	5950	3580	3651	3607	5199	43.2	(2x) 7.5	54.6	(1x) 5.5	(1x) 753
FXVS 1212C- 16D-O	10010	6010	3630	3651	3607	5199	49.4	(2x) 11.0	54.6	(1x) 5.5	(1x) 753
FXVS 1212C- 16D-P	10080	6080	3710	3651	3607	5199	55.6	(2x) 15.0	54.6	(1x) 5.5	(1x) 753
FXVS 1212C- 16Q-K	10000	6010	3630	3651	3607	5199	34.3	(2x) 4.0	54.6	(1x) 5.5	(1x) 751
FXVS 1212C- 16Q-L	10040	6050	3670	3651	3607	5199	39.2	(2x) 5.5	54.6	(1x) 5.5	(1x) 751
FXVS 1212C- 16Q-M	10060	6070	3690	3651	3607	5199	43.1	(2x) 7.5	54.6	(1x) 5.5	(1x) 751
FXVS 1212C- 16Q-O	10120	6120	3750	3651	3607	5199	49.3	(2x) 11.0	54.6	(1x) 5.5	(1x) 751
FXVS 1212C- 16Q-P	10190	6190	3820	3651	3607	5199	55.5	(2x) 15.0	54.6	(1x) 5.5	(1x) 751
FXVS 1212C- 20D-K	10490	6310	3930	3651	3607	5199	34.1	(2x) 4.0	54.6	(1x) 5.5	(1x) 934
FXVS 1212C- 20D-L	10530	6350	3970	3651	3607	5199	38.9	(2x) 5.5	54.6	(1x) 5.5	(1x) 934
FXVS 1212C- 20D-M	10550	6370	3990	3651	3607	5199	42.8	(2x) 7.5	54.6	(1x) 5.5	(1x) 934
FXVS	10600	6420	4050	3651	3607	5199	48.9	(2x)	54.6	(1x)	(1x)



1212C-20D-O								11.0		5.5	934
FXVS 1212C-20D-P	10680	6500	4120	3651	3607	5199	55.0	(2x) 15.0	54.6	(1x) 5.5	(1x) 934
FXVS 1212C-24D-K	11380	7020	4900	3651	3607	6080	33.8	(2x) 4.0	54.6	(1x) 5.5	(1x) 1114
FXVS 1212C-24D-L	11420	7060	4940	3651	3607	6080	38.6	(2x) 5.5	54.6	(1x) 5.5	(1x) 1114
FXVS 1212C-24D-M	11440	7080	4960	3651	3607	6080	42.4	(2x) 7.5	54.6	(1x) 5.5	(1x) 1114
FXVS 1212C-24D-O	11500	7140	5020	3651	3607	6080	48.5	(2x) 11.0	54.6	(1x) 5.5	(1x) 1114
FXVS 1212C-24D-P	11570	7210	5090	3651	3607	6080	54.5	(2x) 15.0	54.6	(1x) 5.5	(1x) 1114
FXVS 1212C-24Q-K	11490	7130	5020	3651	3607	6080	33.8	(2x) 4.0	54.6	(1x) 5.5	(1x) 1117
FXVS 1212C-24Q-L	11530	7170	5060	3651	3607	6080	38.6	(2x) 5.5	54.6	(1x) 5.5	(1x) 1117
FXVS 1212C-24Q-M	11550	7190	5080	3651	3607	6080	42.4	(2x) 7.5	54.6	(1x) 5.5	(1x) 1117
FXVS 1212C-24Q-O	11610	7250	5130	3651	3607	6080	48.5	(2x) 11.0	54.6	(1x) 5.5	(1x) 1117
FXVS 1212C-24Q-P	11680	7320	5200	3651	3607	6080	54.5	(2x) 15.0	54.6	(1x) 5.5	(1x) 1117
FXVS 1212C-24T-K	11520	7160	5040	3651	3607	6080	33.7	(2x) 4.0	54.6	(1x) 5.5	(1x) 1115
FXVS 1212C-24T-L	11560	7200	5080	3651	3607	6080	38.6	(2x) 5.5	54.6	(1x) 5.5	(1x) 1115
FXVS 1212C-24T-M	11580	7220	5100	3651	3607	6080	42.4	(2x) 7.5	54.6	(1x) 5.5	(1x) 1115
FXVS 1212C-24T-O	11630	7270	5150	3651	3607	6080	48.5	(2x) 11.0	54.6	(1x) 5.5	(1x) 1115
FXVS 1212C-24T-P	11710	7340	5230	3651	3607	6080	54.5	(2x) 15.0	54.6	(1x) 5.5	(1x) 1115
FXVS 1212C-28D-K	11980	7440	5320	3651	3607	6080	33.5	(2x) 4.0	54.6	(1x) 5.5	(1x) 1294
FXVS 1212C-28D-L	12020	7480	5360	3651	3607	6080	38.3	(2x) 5.5	54.6	(1x) 5.5	(1x) 1294
FXVS 1212C-28D-M	12040	7500	5380	3651	3607	6080	42.2	(2x) 7.5	54.6	(1x) 5.5	(1x) 1294
FXVS 1212C-	12100	7550	5440	3651	3607	6080	48.2	(2x) 11.0	54.6	(1x) 5.5	(1x) 1294



28D-O											
FXVS 1212C- 30T-K	12460	7820	5700	3651	3607	6080	33.4	(2x) 4.0	54.6	(1x) 5.5	(1x) 1386
FXVS 1212C- 30T-L	12500	7860	5740	3651	3607	6080	38.2	(2x) 5.5	54.6	(1x) 5.5	(1x) 1386
FXVS 1212C- 30T-M	12520	7880	5760	3651	3607	6080	42.0	(2x) 7.5	54.6	(1x) 5.5	(1x) 1386
FXVS 1212C- 30T-O	12570	7940	5820	3651	3607	6080	48.0	(2x) 11.0	54.6	(1x) 5.5	(1x) 1386
FXVS 1212C- 30T-P	12640	8010	5890	3651	3607	6080	53.9	(2x) 15.0	54.6	(1x) 5.5	(1x) 1386
FXVS 1212C- 32Q-K	12690	7960	5840	3651	3607	6080	33.3	(2x) 4.0	54.6	(1x) 5.5	(1x) 1477
FXVS 1212C- 32Q-L	12730	8000	5880	3651	3607	6080	38.0	(2x) 5.5	54.6	(1x) 5.5	(1x) 1477
FXVS 1212C- 32Q-M	12750	8020	5900	3651	3607	6080	41.8	(2x) 7.5	54.6	(1x) 5.5	(1x) 1477
FXVS 1212C- 32Q-O	12800	8080	5960	3651	3607	6080	47.8	(2x) 11.0	54.6	(1x) 5.5	(1x) 1477
FXVS 1212C- 32Q-P	12870	8150	6030	3651	3607	6080	53.7	(2x) 15.0	54.6	(1x) 5.5	(1x) 1477
FXVS 1212C- 36T-K	13310	8400	6280	3651	3607	6080	33.1	(2x) 4.0	54.6	(1x) 5.5	(1x) 1656
FXVS 1212C- 36T-L	13350	8440	6320	3651	3607	6080	37.8	(2x) 5.5	54.6	(1x) 5.5	(1x) 1656
FXVS 1212C- 36T-M	13370	8460	6340	3651	3607	6080	41.6	(2x) 7.5	54.6	(1x) 5.5	(1x) 1656
FXVS 1212C- 36T-O	13400	8500	6380	3651	3607	6080	47.5	(2x) 11.0	54.6	(1x) 5.5	(1x) 1656
FXVS 1212C- 36T-P	13470	8570	6450	3651	3607	6080	53.4	(2x) 15.0	54.6	(1x) 5.5	(1x) 1656
FXVS 1218C- 24Q-K	17080	10480	7270	5480	3607	6230	52.2	(3x) 4.0	85.2	(1x) 7.5	(1x) 1655
FXVS 1218C- 24Q-L	17150	10550	7340	5480	3607	6230	59.6	(3x) 5.5	85.2	(1x) 7.5	(1x) 1655
FXVS 1218C- 24Q-M	17170	10570	7360	5480	3607	6230	65.6	(3x) 7.5	85.2	(1x) 7.5	(1x) 1655
FXVS 1218C- 24Q-O	17290	10700	7480	5480	3607	6230	74.9	(3x) 11.0	85.2	(1x) 7.5	(1x) 1655
FXVS 1218C- 24Q-P	17390	10800	7580	5480	3607	6230	84.3	(3x) 15.0	85.2	(1x) 7.5	(1x) 1655



FXVS 1218C- 24T-K	17100	10510	7300	5480	3607	6230	52.3	(3x) 4.0	85.2	(1x) 7.5	(1x) 1656
FXVS 1218C- 24T-L	17170	10580	7370	5480	3607	6230	59.8	(3x) 5.5	85.2	(1x) 7.5	(1x) 1656
FXVS 1218C- 24T-M	17190	10600	7390	5480	3607	6230	65.7	(3x) 7.5	85.2	(1x) 7.5	(1x) 1656
FXVS 1218C- 24T-O	17320	10720	7510	5480	3607	6230	75.1	(3x) 11.0	85.2	(1x) 7.5	(1x) 1656
FXVS 1218C- 24T-P	17420	10820	7610	5480	3607	6230	84.5	(3x) 15.0	85.2	(1x) 7.5	(1x) 1656
FXVS 1218C- 32Q-K	18870	11730	8520	5480	3607	6230	51.5	(3x) 4.0	85.2	(1x) 7.5	(1x) 2199
FXVS 1218C- 32Q-L	18940	11800	8590	5480	3607	6230	58.9	(3x) 5.5	85.2	(1x) 7.5	(1x) 2199
FXVS 1218C- 32Q-M	18960	11820	8610	5480	3607	6230	64.8	(3x) 7.5	85.2	(1x) 7.5	(1x) 2199
FXVS 1218C- 32Q-O	19080	11940	8730	5480	3607	6230	74.0	(3x) 11.0	85.2	(1x) 7.5	(1x) 2199
FXVS 1218C- 32Q-P	19180	12040	8830	5480	3607	6230	83.2	(3x) 15.0	85.2	(1x) 7.5	(1x) 2199
FXVS 1218C- 36H-K	19940	12520	9310	5480	3607	6230	51.1	(3x) 4.0	85.2	(1x) 7.5	(1x) 2468
FXVS 1218C- 36H-L	20010	12590	9380	5480	3607	6230	58.4	(3x) 5.5	85.2	(1x) 7.5	(1x) 2468
FXVS 1218C- 36H-M	20030	12610	9400	5480	3607	6230	64.2	(3x) 7.5	85.2	(1x) 7.5	(1x) 2468
FXVS 1218C- 36H-O	20120	12700	9490	5480	3607	6230	73.4	(3x) 11.0	85.2	(1x) 7.5	(1x) 2468
FXVS 1218C- 36H-P	20220	12800	9590	5480	3607	6230	82.6	(3x) 15.0	85.2	(1x) 7.5	(1x) 2468



Sound attenuation

Closed circuit cooling towers

Engineering data

Remark: Do not use for construction. Refer to factory certified dimensions & weights. This page includes data current at time of publication, which should be reconfirmed at the time of purchase. In the interest of product improvement, specifications, weights and dimensions are subject to change without notice.

[FXVS cooling tower performance at standard conditions - 30% EG](#)

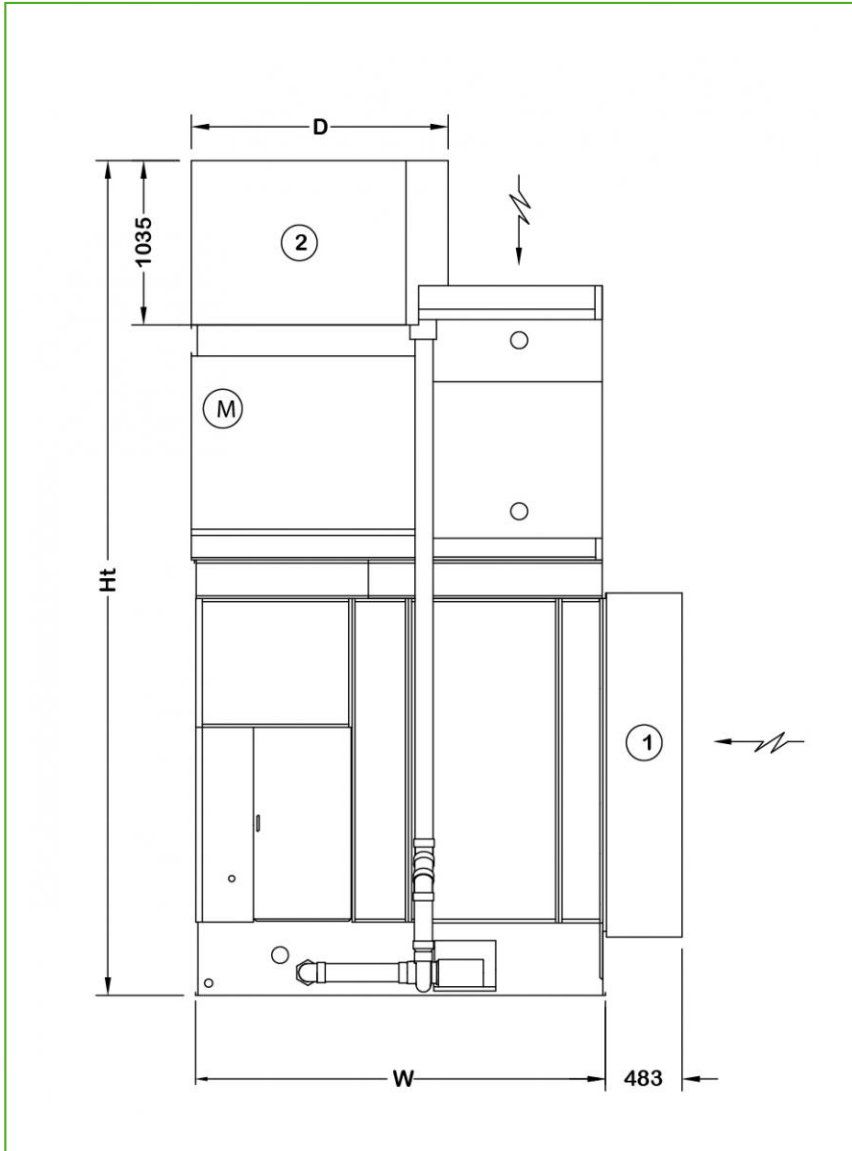
[FXVS cooling tower performance at standard conditions - 30% PG](#)

[FXVS cooling tower performance at standard conditions - water](#)

[FXVS cooling tower - pressure drop](#)

Last update: 01/06/2023

Sound attenuation



1. Intake attenuator; 2. discharge attenuator



Model	Dimensions (mm)		Weights (kg)	
	D	Ht	Intake	Discharge
FXVS 0806B-12D-G	1778	7166	180	70
FXVS 0806B-12D-H	1778	7166	180	70
FXVS 0806B-12D-J	1778	7166	180	70
FXVS 0806B-12D-K	1778	7166	180	70
FXVS 0806B-12D-L	1778	7166	180	70
FXVS 0806B-16D-G	1778	7166	180	70
FXVS 0806B-16D-H	1778	7166	180	70
FXVS 0806B-16D-J	1778	7166	180	70
FXVS 0806B-16D-K	1778	7166	180	70
FXVS 0806B-16D-L	1778	7166	180	70
FXVS 0806B-20D-G	1778	7166	180	70
FXVS 0806B-20D-H	1778	7166	180	70
FXVS 0806B-20D-J	1778	7166	180	70
FXVS 0806B-20D-K	1778	7166	180	70
FXVS 0806B-20D-L	1778	7166	180	70
FXVS 0806B-24D-G	1778	8047	180	70
FXVS 0806B-24D-H	1778	8047	180	70
FXVS 0806B-24D-J	1778	8047	180	70
FXVS 0806B-24D-K	1778	8047	180	70
FXVS 0806B-24D-L	1778	8047	180	70
FXVS 0806B-28D-G	1778	8047	180	70
FXVS 0806B-28D-H	1778	8047	180	70
FXVS 0806B-28D-J	1778	8047	180	70
FXVS 0806B-28D-K	1778	8047	180	70
FXVS 0806B-28D-L	1778	8047	180	70
FXVS 0806B-32D-G	1778	8047	180	70
FXVS 0806B-32D-H	1778	8047	180	70
FXVS 0806B-32D-J	1778	8047	180	70
FXVS 0806B-32D-K	1778	8047	180	70
FXVS 0806B-32D-L	1778	8047	180	70
FXVS 0806B-36D-G	1778	8047	180	70
FXVS 0806B-36D-H	1778	8047	180	70
FXVS 0806B-36D-J	1778	8047	180	70
FXVS 0806B-36D-K	1778	8047	180	70
FXVS 0806B-36D-L	1778	8047	180	70
FXVS 0809B-16D-K	1473	7166	180	100
FXVS 0809B-16D-L	1473	7166	180	100
FXVS 0809B-20D-K	1473	7166	180	100
FXVS 0809B-20D-L	1473	7166	180	100
FXVS 0809B-24D-K	1473	8047	180	100
FXVS 0809B-24D-L	1473	8047	180	100
FXVS 0809B-24T-K	1473	8047	180	100
FXVS 0809B-24T-L	1473	8047	180	100
FXVS 0809B-28D-K	1473	8047	180	100
FXVS 0809B-28D-L	1473	8047	180	100
FXVS 0809B-30T-K	1473	8047	180	100
FXVS 0809B-30T-L	1473	8047	180	100
FXVS 0809B-32D-K	1473	8047	180	100
FXVS 0809B-32D-L	1473	8047	180	100
FXVS 0809B-36D-K	1473	8047	180	100
FXVS 0809B-36D-L	1473	8047	180	100
FXVS 0809B-36T-K	1473	8047	180	100
FXVS 0809B-36T-L	1473	8047	180	100
FXVS 0812B-12D-K	1778	7166	330	130
FXVS 0812B-12D-L	1778	7166	330	130
FXVS 0812B-12D-M	1778	7166	330	130



FXVS 0812B-12D-O	1778	7166	330	130
FXVS 0812B-16D-K	1778	7166	330	130
FXVS 0812B-16D-L	1778	7166	330	130
FXVS 0812B-16D-M	1778	7166	330	130
FXVS 0812B-16D-O	1778	7166	330	130
FXVS 0812B-16Q-K	1778	7166	330	130
FXVS 0812B-16Q-L	1778	7166	330	130
FXVS 0812B-16Q-M	1778	7166	330	130
FXVS 0812B-16Q-O	1778	7166	330	130
FXVS 0812B-20D-K	1778	7166	330	130
FXVS 0812B-20D-L	1778	7166	330	130
FXVS 0812B-20D-M	1778	7166	330	130
FXVS 0812B-20D-O	1778	7166	330	130
FXVS 0812B-24Q-K	1778	8047	330	130
FXVS 0812B-24Q-L	1778	8047	330	130
FXVS 0812B-24Q-M	1778	8047	330	130
FXVS 0812B-24Q-O	1778	8047	330	130
FXVS 0812B-24T-K	1778	8047	330	130
FXVS 0812B-24T-L	1778	8047	330	130
FXVS 0812B-24T-M	1778	8047	330	130
FXVS 0812B-24T-O	1778	8047	330	130
FXVS 0812B-30T-K	1778	8047	330	130
FXVS 0812B-30T-L	1778	8047	330	130
FXVS 0812B-30T-M	1778	8047	330	130
FXVS 0812B-30T-O	1778	8047	330	130
FXVS 0812B-32Q-K	1778	8047	330	130
FXVS 0812B-32Q-L	1778	8047	330	130
FXVS 0812B-32Q-M	1778	8047	330	130
FXVS 0812B-32Q-O	1778	8047	330	130
FXVS 0812B-36T-K	1778	8047	330	130
FXVS 0812B-36T-L	1778	8047	330	130
FXVS 0812B-36T-M	1778	8047	330	130
FXVS 0812B-36T-O	1778	8047	330	130
FXVS 0818B-24Q-K	1778	8200	500	190
FXVS 0818B-24Q-L	1778	8200	500	190
FXVS 0818B-24Q-M	1778	8200	500	190
FXVS 0818B-24Q-O	1778	8200	500	190
FXVS 0818B-24T-K	1778	8200	500	190
FXVS 0818B-24T-L	1778	8200	500	190
FXVS 0818B-24T-M	1778	8200	500	190
FXVS 0818B-24T-O	1778	8200	500	190
FXVS 0818B-32Q-K	1778	8200	500	190
FXVS 0818B-32Q-L	1778	8200	500	190
FXVS 0818B-32Q-M	1778	8200	500	190
FXVS 0818B-32Q-O	1778	8200	500	190
FXVS 0818B-36H-K	1778	8200	500	190
FXVS 0818B-36H-L	1778	8200	500	190
FXVS 0818B-36H-M	1778	8200	500	190
FXVS 0818B-36H-O	1778	8200	500	190
FXVS 1012C-12D-K	1778	7979	370	130
FXVS 1012C-12D-L	1778	7979	370	130
FXVS 1012C-12D-M	1778	7979	370	130
FXVS 1012C-12D-O	1778	7979	370	130
FXVS 1012C-16D-K	1778	7979	370	130
FXVS 1012C-16D-L	1778	7979	370	130
FXVS 1012C-16D-M	1778	7979	370	130
FXVS 1012C-16D-O	1778	7979	370	130
FXVS 1012C-16Q-K	1778	7979	370	130
FXVS 1012C-16Q-L	1778	7979	370	130
FXVS 1012C-16Q-M	1778	7979	370	130
FXVS 1012C-16Q-O	1778	7979	370	130



FXVS 1012C-20D-K	1778	7979	370	130
FXVS 1012C-20D-L	1778	7979	370	130
FXVS 1012C-20D-M	1778	7979	370	130
FXVS 1012C-20D-O	1778	7979	370	130
FXVS 1012C-24D-K	1778	8860	370	130
FXVS 1012C-24D-L	1778	8860	370	130
FXVS 1012C-24D-M	1778	8860	370	130
FXVS 1012C-24D-O	1778	8860	370	130
FXVS 1012C-24Q-K	1778	8860	370	130
FXVS 1012C-24Q-L	1778	8860	370	130
FXVS 1012C-24Q-M	1778	8860	370	130
FXVS 1012C-24Q-O	1778	8860	370	130
FXVS 1012C-24T-K	1778	8860	370	130
FXVS 1012C-24T-L	1778	8860	370	130
FXVS 1012C-24T-M	1778	8860	370	130
FXVS 1012C-24T-O	1778	8860	370	130
FXVS 1012C-28D-K	1778	8860	370	130
FXVS 1012C-28D-L	1778	8860	370	130
FXVS 1012C-28D-M	1778	8860	370	130
FXVS 1012C-30T-K	1778	8860	370	130
FXVS 1012C-30T-L	1778	8860	370	130
FXVS 1012C-30T-M	1778	8860	370	130
FXVS 1012C-30T-O	1778	8860	370	130
FXVS 1012C-32Q-K	1778	8860	370	130
FXVS 1012C-32Q-L	1778	8860	370	130
FXVS 1012C-32Q-M	1778	8860	370	130
FXVS 1012C-32Q-O	1778	8860	370	130
FXVS 1012C-36T-K	1778	8860	370	130
FXVS 1012C-36T-L	1778	8860	370	130
FXVS 1012C-36T-M	1778	8860	370	130
FXVS 1012C-36T-O	1778	8860	370	130
FXVS 1018C-24Q-K	1778	9010	570	190
FXVS 1018C-24Q-L	1778	9010	570	190
FXVS 1018C-24Q-M	1778	9010	570	190
FXVS 1018C-24Q-O	1778	9010	570	190
FXVS 1018C-24Q-P	1778	9010	570	190
FXVS 1018C-24T-K	1778	9010	570	190
FXVS 1018C-24T-L	1778	9010	570	190
FXVS 1018C-24T-M	1778	9010	570	190
FXVS 1018C-24T-O	1778	9010	570	190
FXVS 1018C-24T-P	1778	9010	570	190
FXVS 1018C-32Q-K	1778	9010	570	190
FXVS 1018C-32Q-L	1778	9010	570	190
FXVS 1018C-32Q-M	1778	9010	570	190
FXVS 1018C-32Q-O	1778	9010	570	190
FXVS 1018C-32Q-P	1778	9010	570	190
FXVS 1018C-36H-K	1778	9010	570	190
FXVS 1018C-36H-L	1778	9010	570	190
FXVS 1018C-36H-M	1778	9010	570	190
FXVS 1018C-36H-O	1778	9010	570	190
FXVS 1018C-36H-P	1778	9010	570	190
FXVS 1212C-12D-K	1930	7979	370	140
FXVS 1212C-12D-L	1930	7979	370	140
FXVS 1212C-12D-M	1930	7979	370	140
FXVS 1212C-12D-O	1930	7979	370	140
FXVS 1212C-12D-P	1930	7979	370	140
FXVS 1212C-16D-K	1930	7979	370	140
FXVS 1212C-16D-L	1930	7979	370	140
FXVS 1212C-16D-M	1930	7979	370	140
FXVS 1212C-16D-O	1930	7979	370	140
FXVS 1212C-16D-P	1930	7979	370	140



FXVS 1212C-16Q-K	1930	7979	370	140
FXVS 1212C-16Q-L	1930	7979	370	140
FXVS 1212C-16Q-M	1930	7979	370	140
FXVS 1212C-16Q-O	1930	7979	370	140
FXVS 1212C-16Q-P	1930	7979	370	140
FXVS 1212C-20D-K	1930	7979	370	140
FXVS 1212C-20D-L	1930	7979	370	140
FXVS 1212C-20D-M	1930	7979	370	140
FXVS 1212C-20D-O	1930	7979	370	140
FXVS 1212C-20D-P	1930	7979	370	140
FXVS 1212C-24D-K	1930	8860	370	140
FXVS 1212C-24D-L	1930	8860	370	140
FXVS 1212C-24D-M	1930	8860	370	140
FXVS 1212C-24D-O	1930	8860	370	140
FXVS 1212C-24D-P	1930	8860	370	140
FXVS 1212C-24Q-K	1930	8860	370	140
FXVS 1212C-24Q-L	1930	8860	370	140
FXVS 1212C-24Q-M	1930	8860	370	140
FXVS 1212C-24Q-O	1930	8860	370	140
FXVS 1212C-24Q-P	1930	8860	370	140
FXVS 1212C-24T-K	1930	8860	370	140
FXVS 1212C-24T-L	1930	8860	370	140
FXVS 1212C-24T-M	1930	8860	370	140
FXVS 1212C-24T-O	1930	8860	370	140
FXVS 1212C-24T-P	1930	8860	370	140
FXVS 1212C-28D-K	1930	8860	370	140
FXVS 1212C-28D-L	1930	8860	370	140
FXVS 1212C-28D-M	1930	8860	370	140
FXVS 1212C-28D-O	1930	8860	370	140
FXVS 1212C-30T-K	1930	8860	370	140
FXVS 1212C-30T-L	1930	8860	370	140
FXVS 1212C-30T-M	1930	8860	370	140
FXVS 1212C-30T-O	1930	8860	370	140
FXVS 1212C-30T-P	1930	8860	370	140
FXVS 1212C-32Q-K	1930	8860	370	140
FXVS 1212C-32Q-L	1930	8860	370	140
FXVS 1212C-32Q-M	1930	8860	370	140
FXVS 1212C-32Q-O	1930	8860	370	140
FXVS 1212C-32Q-P	1930	8860	370	140
FXVS 1212C-36T-K	1930	8860	370	140
FXVS 1212C-36T-L	1930	8860	370	140
FXVS 1212C-36T-M	1930	8860	370	140
FXVS 1212C-36T-O	1930	8860	370	140
FXVS 1212C-36T-P	1930	8860	370	140
FXVS 1218C-24Q-K	1930	9010	570	200
FXVS 1218C-24Q-L	1930	9010	570	200
FXVS 1218C-24Q-M	1930	9010	570	200
FXVS 1218C-24Q-O	1930	9010	570	200
FXVS 1218C-24Q-P	1930	9010	570	200
FXVS 1218C-24T-K	1930	9010	570	200
FXVS 1218C-24T-L	1930	9010	570	200
FXVS 1218C-24T-M	1930	9010	570	200
FXVS 1218C-24T-O	1930	9010	570	200
FXVS 1218C-24T-P	1930	9010	570	200
FXVS 1218C-32Q-K	1930	9010	570	200
FXVS 1218C-32Q-L	1930	9010	570	200
FXVS 1218C-32Q-M	1930	9010	570	200
FXVS 1218C-32Q-O	1930	9010	570	200
FXVS 1218C-32Q-P	1930	9010	570	200
FXVS 1218C-36H-K	1930	9010	570	200
FXVS 1218C-36H-L	1930	9010	570	200



FXVS 1218C-36H-M	1930	9010	570	200
FXVS 1218C-36H-O	1930	9010	570	200
FXVS 1218C-36H-P	1930	9010	570	200