



# Geluidsdemping HD

Open koeltorens

## Technische gegevens

**REMARK:** Do not use for construction. Refer to factory certified dimensions & weights. This page includes data current at the time of publication, which should be reconfirmed at the time of purchase. In the interest of the product improvement, specifications, weights and dimensions are subject to change without notice.

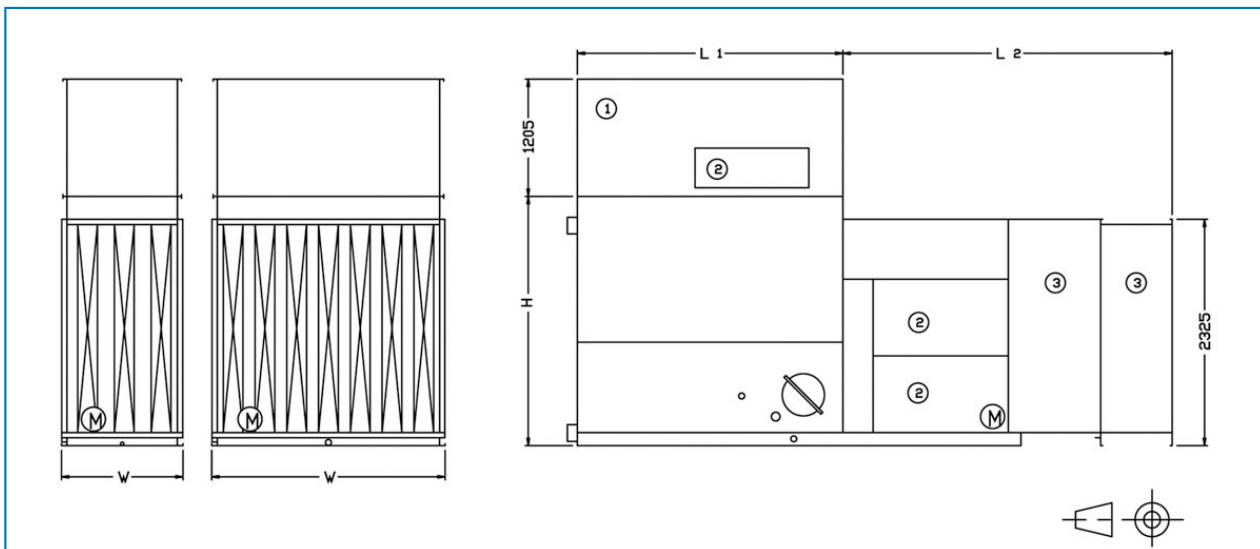
### General notes

1. All connections 100 mm and smaller are MPT. Connections 200 mm and larger than 100 mm are bevelled-for-welding.
2. Fan kW is at 0 Pa ESP. To operate against external static pressure up to 125 Pa, consult your BAC representative for size and location.
3. Make up, overflow, suction, drain connections and access door can be provided on side opposite to that shown, consult your BAC representative.
4. Unit height is indicative, for precise value refer to certified print.
5. Shipping/operating weights indicated are for units without accessories such as sound attenuators, discharge hoods, etc. Consult factory certified prints to obtain weight additions and the heaviest section to be lifted.

[VTL-E cooling tower performance at standard conditions](#)

**Laatst bijgewerkt:** 24/08/2024

## Geluidsdemping HD



1. Afvoerdemper; 2. Toegangsdeur; 3. Inlaatdemper; H & W: unit hoogte en breedte (zie technische gegevens).



Model	Afmetingen (mm)		Gewicht (kg)		
	L2	L	Aanzuigzijde	Uitblaaszijde	Totaal
VTL-E 039 G - 079 K	3125	1820	655	235	890
VTL-E 076 J - 095 K	3375	2730	660	315	975
VTL-E 086 L - 137 M	3375	3650	660	385	1045
VTL-E 139 L - 227 O	3375	2730	980	500	1480
VTL-E 225 O - 272 P	3375	3650	980	605	1585