

# Options and accessories

## Closed circuit cooling towers

### Options and accessories

Below is a listing of the main FXVS options and accessories. If your required option or accessory is not listed, look no further than your [local BAC representative](#).



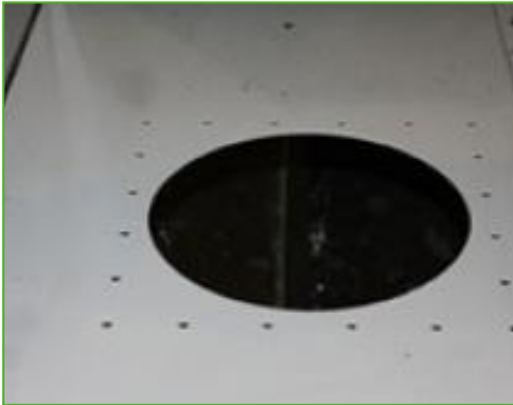
#### Sound attenuation

Reducing noise at air **intake and discharge points** brings us closer to silent cooling equipment.



#### Whisper Quiet fan

Reduce noise even further with **ultra low-noise factory-tested fans**.



### Remote sump connection

The best way to **prevent a sump freezing** is to use the auxiliary remote variety within a heated area. Shutting off the circulating pump allows all the water in the water distribution, as well as that in suspension and the sump to drain freely to the auxiliary sump.



### Extended lubrication lines

Extended lubrication lines with easily accessible grease fittings can be used **to lubricate** fan shaft bearings.



### Internal service platform

An internal platform helping you **access the unit top inside** and safely inspect your cooling towers.



### External service platform

An external platform helping you **access the external unit top** and safely inspect your cooling equipment.



### Vibration cut out switch

When excessive vibration occurs, this switch shuts down the fan, ensuring your cooling equipment **operates safely**.



### Motor removal davit

For **easy removal or lifting** of the side motor.



## Electric water level control package

For perfectly precise water level control, replace the standard mechanical valve with our electrical water level controller.



## Safety switch

Cuts power to motors **with safety in mind** during inspection or maintenance.



## Basin heater package

Thanks to our factory-installed heaters, the water stays at 4°C and **never freezes**, even during equipments downtime and however cold it gets outside.



## Standby pump

Install a standby **reserve spray pump** as failure backup.



## Water treatment equipment

Devices to control water treatment are needed to ensure proper **cooling tower water care**. Not only does this help protect the components and fill pack, controlling corrosion, scaling and fouling, it also avoids the proliferation of harmful bacteria, including **legionella**, in the recirculating water.



## Filter

Separators and media filters efficiently **remove suspended solids** in the recirculating water, reducing system cleaning costs and optimizing water treatment results. Filtration helps you keep the recirculating water clean.



## Sump sweeper piping

Sump sweeper piping **prevents sediment collecting in the cold water basin** of the unit. A complete piping system, including nozzles, is installed in the basin **for connection to side stream filtration** equipment.



## Clean out port

Clean out port **makes it easy to eliminate silt and sludge** from the basin when cleaning and flushing the sump.



## Flanges

Flanges facilitate **piping connections** on-site.