

# Options and Accessories

## Closed circuit cooling towers

### Options and Accessories

Below is a listing of the main Polairis closed circuit cooler options and accessories. If your required option or accessory is not listed, look no further than your [local BAC representative](#).



#### Sound attenuation

Reducing noise at air intake and discharge points brings us closer to silent cooling equipment.



#### Remote sump connection

The best way to **prevent a sump freezing** is to use the auxiliary remote variety within a heated area. Shutting off the circulating pump allows all the water in the water distribution, as well as that in suspension and the sump to drain freely to the auxiliary sump.



### Plume abatement coil

A finned discharge coil is installed in your cooling tower discharge and piped in series with the wet coil. This **reduces or eliminates plumes** and **extends the dry cooling capacity**.



### Heater package

Thanks to our factory-installed heaters, the water stays at 4°C and **never freezes**, even during equipment downtime and however cold it gets outside.



### Electric water level control package

**For perfectly precise water level control**, replace the standard mechanical valve with our electrical water level controller.



## Platform

To inspect and maintain from the top of the unit more **easily** and **safely**, platforms can be installed.



## Ladder, safety cage and handrail

A ladder, safety cage and handrails **all facilitate access to the top of the unit** and safe inspection of your cooler.



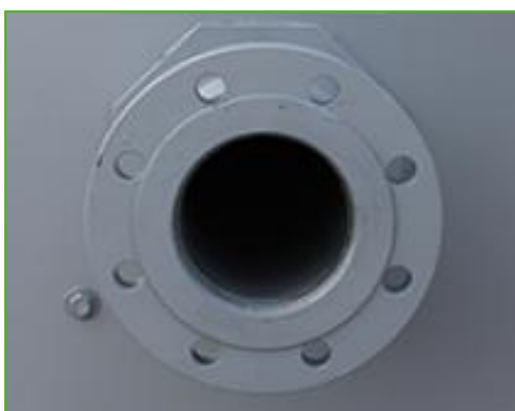
## Discharge hood

Discharge hoods **reduce the risk of re-circulation** in tight enclosures by increasing discharge air velocity, and can be used to elevate the unit discharge above adjacent walls to comply with layout guidelines.



## Standby pump

Install a standby **reserve spray pump** as failure backup!



## Flange

Flanges facilitate **pipng connections** on-site.



## Water treatment equipment

Devices to control water treatment are needed to ensure proper **closed circuit cooler water care**. Not only does this help protect the components, controlling corrosion, scaling and fouling, it also avoids the proliferation of harmful bacteria, including **legionella**, in the recirculating water.



## Filter

Separators and media filters efficiently **remove suspended solids** in the recirculating water, reducing system cleaning costs and optimizing water treatment results. Filtration helps you keep the recirculating water clean.



## Clean out port

Clean out port **makes it easy to eliminate silt and sludge** from the cooler basin when cleaning and flushing the sump.



## Sump sweeper piping

Sump sweeper piping **prevents sediment collecting in the cold water basin** of the unit. A complete piping system, including nozzles, are installed in the basin of the tower **for connection to side stream filtration** equipment.