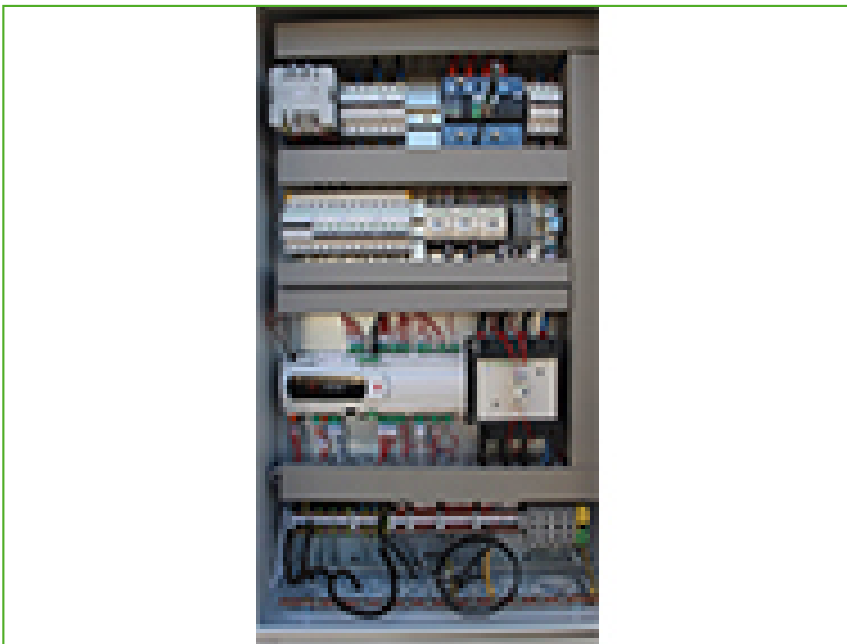


## Closed circuit cooling towers

## Options and accessories

### Electrical panel heater



The default iPilot® electrical panel is equipped to be installed in ambient temperatures that go down to -10°C.

For climates where the ambient temperature can become even lower, an electrical heater can prevent damage to the internal components inside the electrical panel for ambient temperatures as low as -40°C.

**Want to install a Nexus® in a climate with ambient temperatures as low as -40°C?** Contact your [local BAC representative](#).