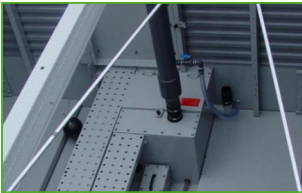
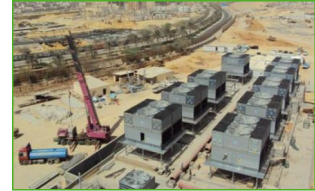




FXVT

Closed circuit cooling towers



Key benefits

- Star in energy efficiency
- Low maintenance and easy inspection
- Optimal performance guaranteed

FXVT characteristics

Combined flow, axial fan, induced draft

Capacity range

up to 2320 kW

Maximum entering fluid temperature

82°C

Typical applications

- Medium to large HVAC and industrial applications such as electric arc furnaces and pharmaceutical plants.



Star in energy-efficiency

- **Evaporative cooling** PLUS unique combined heat transfer system for minimized system-wide energy consumption.
- **Axial fan** – half the consumption of rivals and huge single cell capacity: saving you more!
- **BACross II fill** factory-configured for unrivalled water/air contact and minimal air pressure drop. Guarantees **optimal cooling tower efficiency** with cooling system energy well under control.
- **High efficiency fan motors.**

Low maintenance and easy inspection

- Inspect and maintain towers with **unrivalled comfort and safely: while standing** inside.
- The FXVT has a **spacious plenum** (internal area) and **easy inspection/maintenance access**
- **Fans** are easily accessible from the in- and outside
- Inspect internal fill and coil easily via **removable drift eliminator modules**.
- The **BACross II fill** is telescopically-supported for easy sheet by sheet inspection/cleaning and **no dismantling**.
- Self-cleaning cold water basin and fill above **sloped basin** to flush out dirt and debris.

Optimal performance guaranteed

- The **thermal performance** of FXVT is tested and certified by **CTI and Eurovent**.
- Unique and patented heat transfer system: **featuring combined flow** via heat exchange coil and fill pack, for fine temperature applications and thermal challenges.
- **Huge industry-best single cell capacity!**
- **BACross II fill** - patented sheet and **maximum air/water contact** for optimal heat transfer performance.
- Encased in **corrosion-resistant fibreglass** polyester for long service life.

Ultra silent design

- FXVT units include **low noise axial fans** for minimal surrounding noise. To reduce noise even further, choose for **Whisper Quiet fans**.
- Factory designed, tested and rated **sound attenuation** is available on air inlet to cut operation noise even further.
- **BACross II fill** guides smoothly the water all the way into the basin **without water splash noise**.

Cheap to install

- FXVT cooling towers are factory-built and shipped in sections for larger models to reduce the overall size and weight, allowing **easy on-site section assembly** with smaller crane.

Unmatched hygiene control



- Easy-clean and easy-inspect FXVT towers **reduce hygiene risks** from bacteria or biofilm inside.
- **Combined inlet shields** block sunlight to prevent biological growth in the tower, filter the air and stop water splashing outside.
- The **drift eliminators** to prevent droplets escaping into the air are tested and certified by Eurovent.

Interested in the FXVT cooling tower for cooling your process fluid? Contact your [local BAC representative](#).

Downloads

- [FXVT closed circuit cooling towers](#)
- [Operating and Maintenance FXVT](#)
- [Rigging and Installation FXVT](#)
- [BAC - Eurovent Certification](#)
- [Spare Parts for FXVT](#)
- [Retrofit Opportunities for FXVT](#)
- [Combined Flow Technology](#)